

Accelerate your
online business



Parttrap[®]
ONE

 Parttrap[®]

eCommerce in ONE Solution

CMS

Partrap ONE lets you manage and maintain every aspect of your site creation such as content, presentation and navigation. Responsive design with flexible images and fluid grids makes your site adapt to any device. One common design means less maintenance and more consistency in your online presence.

ERP Adapter

A two-way interaction with your business data is vital for any professional B2B eCommerce solution. Instead of developing a costly custom integration, you can utilize a certified, supported, high performance ERP adapter from Partrap.

B2B Business Logic

Customer specific assortment, individual pricing, payment terms and credit limit are examples of B2B specific features that require a tight integration to ERP. Partrap ONE is built to honor all settings and business rules you have already set up in your ERP system.

PIM

Partrap ONE provides you with a powerful PIM system that works seamlessly with your ERP where you may link, enrich and distribute ALL of your product information to multiple data consumers such as web sites, mobile apps or catalog printing.



eCommerce for Manufacturers and Distributors

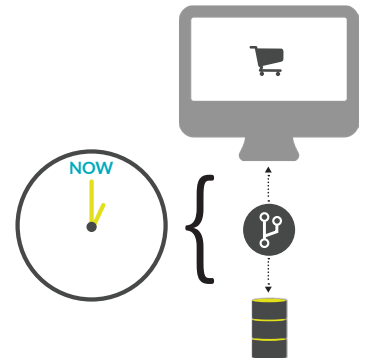
To stay on top of the digital transformation, you need to offer updated product information, order entry and real-time business information online 24/7. Partrap ONE offers everything you need for your online business in ONE solution and strengthens your ability to sell your products via multiple channels. Regardless of whether you run a local company or a multi-national enterprise, Partrap ONE will manage your online business and support your growth.

with Real-time ERP integration

Real-time Integration to your ERP is included in Partrap ONE

The benefit of real-time integration is that vital business data such as customer terms, stock availability or order status is always reliable.

A sophisticated technology makes sure that the integration offers high performance without adding any load on the ERP database.



Partrap[®]
ONE
STUDIO

Partrap ONE Studio

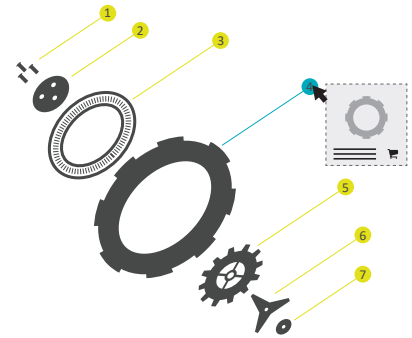
Partrap ONE Studio is a web based administration tool used to manage functionality, users, product data, static content, navigation and design for your websites without any need for programming or extensive knowledge of html. PIM and CMS interact seamlessly inside Studio.



Selected Features

Spare Parts Management

Ordering of spare parts often requires spare parts catalogs with exploded views and component lists distributed in paper format. Partrap ONE includes a convenient solution for keeping all spare parts information up-to-date and made available online via clickable pages. The user can easily locate the correct spare part, verify price and availability and order online with a click.



Smart Product Filters

Partrap ONE offers great features for finding the product or part you are looking for. Use product attributes for searching, filtering or comparing within the product assortment. You can easily build filter panels which guide the user through the selection process.



Product Relations & BOM

Partrap ONE lets you set up relations between products. You can bundle multiple items as a kit, suggest suitable accessories or replacements and specify the BOM products included in a certain product. Create Virtual Products that represent variants of a product. For example, apparel, shoes or any other product available in multiple colors, sizes or other dimensions can easily be managed.



Product Data Enrichment

The main reason for abandoned carts is insufficient product data needed for a purchase decision. Partrap ONE makes it easy for you to provide your customers with updated, rich and reliable product data such as texts, images, technical attributes, documents, media files and other content to simplify product selection and support the purchasing decision.





User experience & Customer service

User Experience means everything. Parttrap ONE lets you define your Target Groups and present relevant content, navigation and features for each Target Group visiting the site. It supports personalization which is key for building up a premium relationship with your customers and also enables you to offer your customers 24/7 customer service where they can view real-time order status and order history.



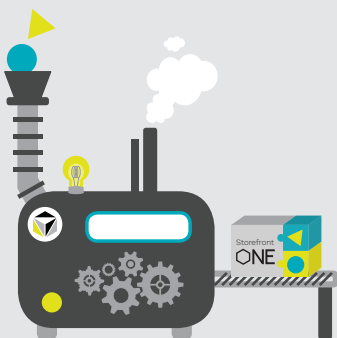
Scalability for your growth

Parttrap ONE is a scalable platform, designed to support expanding organizations. A single instance of Parttrap ONE can handle multiple sales companies, markets, brands, languages and currencies. Add new markets using a centralized approach, but keep the flexibility to adapt to market specific requirements like product assortment, payment options, freight options and more.



Responsive Design

Today, you have to support all types of devices used to browsing your site. With Parttrap ONE, there is no need for separate sites for mobile or tablet users. You have complete control over what displays in each view size.



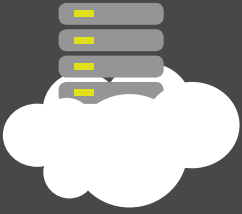
Customized Features

There are many standard add-on features available for the Parttrap platform. However, in case you need a specific feature or functionality that is not available as a standard option, we provide customized features upon request.

“What drives us is to utilize proven technology to build innovative software for B2B business processes. Our vision is to support companies with world-class solutions making them leaders of their industry.”

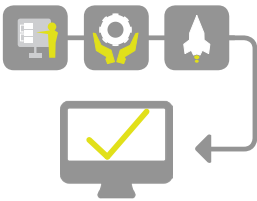
-Ove Tengberg, CEO

Our Services



Hosting

Our Hosting Services have been designed to provide high-quality hosting. The combination of secure access to your business-critical information and a complete infrastructure enables you to concentrate on your core business. We offer hosted solutions and complete on-demand implementations if you wish to minimize the management of your IT infrastructure.



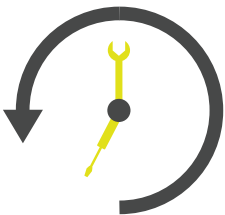
Set up

Our implementation methodology is based on a tight cooperation between our eCommerce specialists and your business specialists. Together, we will fine tune the design, navigation and functionality to exceed your customers' expectations and make sure that you get a quick return on your investment.



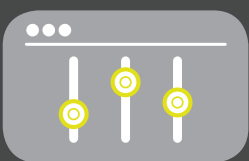
Site design

We provide a very high proportion of the functional requirements already in our standard version of Parttrap ONE, but if necessary, we offer customization to fully support your unique requirements.



Support

Our online support service is available around the clock with status updates and full transparency. Our support staff can monitor your system in real-time in addition to the automatic incident report system. This means that any problem can be solved quickly based on facts rather than guessing.



Optimization & Customization

By measuring business performance and finetuning the system, increased traffic, improved conversion rates and maximized profit can be achieved. Customer service level can be improved and made available 24/7 with the features your customers are asking for. We will assist you to get the success you deserve from using our technology.



GOTHENBURG (HQ)

Johan på Gårdas gata 5A
(14 TH FLOOR)
SE-412 50 GOTHENBURG
SWEDEN

+46 31 285 280
info@parttrap.com

www.parttrap.com