

# Parttrap<sup>®</sup> ONE



**4.11**

Release Notes

# monitor

ERP SYSTEM

Monitor G5  
*New integration*

- Partrap ONE is now, in addition to G4, also integrated to monitor G5



### Spare Parts Management *Improvement*

- In the section included in diagram books on a product detail page it is now possible to select default list view. This makes it possible to list the included exploded views in grid, list with thumbnail in addition to list that was previously the only option



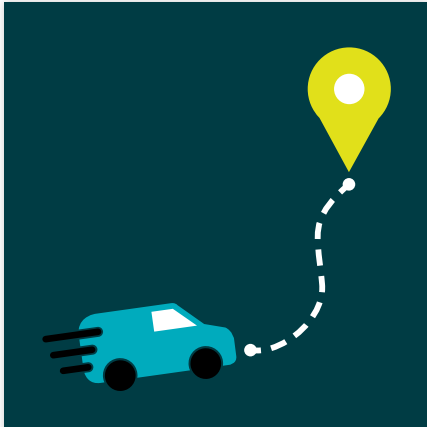
### Claims & Returns Management *Improvement*

Return charge can now be expressed as amount and not only as percentage.

Add-ons & Connectors

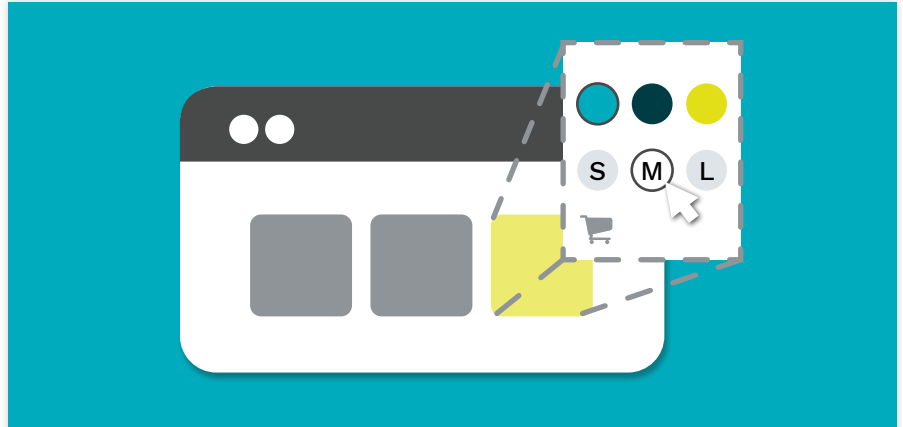
New features

Improvements



Shipment address

There is a new privilege that controls shipment address input. For users without the privilege, the entered zip code is validated against the list of existing zip codes. If you have the privilege, you are allowed to enter a custom zip code.



Product selector in product list

It's now possible to include the ERP product selector in the node list. This enables the possibility to already in the product list select an ERP product within a VP based on selecting size & color.

*Must be setup by Partrap - Contact us for more information*



Share by email

New option to share by email. Needs to be configured on the "Social page share" section.



Track orders from sites

Site ID is stored with the order, which makes it possible to track what site an order came from.



Product list Sort Order

We have introduced Lucene Search in Partrap ONE which will make sort order of products in product lists easier to configure.

Must be set up by Partrap - Contact us for more information

# Partrap<sup>®</sup>

## CUSTOMER CENTER

### Coming soon: Advanced Cookies opt-out functionality



After receiving many inquiries for how to enable customers to opt-out of 3rd party functions not needed to complete core functionality of the store (ie. buying a product), we've found a solution that not only delivers this service, but its live scanning functionality also keeps track of any changes and makes administration of cookies a breeze.

Integration to this 3rd party service is coming soon  
Contact Partrap for more information



### Reading tips from The Customer Center Team

- [Controlling web crawlers with robots.txt file »](#)
- [Embedding videos from YouTube & Vimeo »](#)
- [Import/Delete attributes »](#)
- [Import/Delete Users »](#)

### Useful links

Register Support Tickets & Change Requests [HERE »](#)

Read more Partrap ONE Release Notes [HERE »](#)

Learn about Partrap ONE functionalities [HERE »](#)



## Parttrap HQ

Johan på Gårdas gata 5A (14 TH FLOOR)  
SE-412 50 GOTHENBURG  
SWEDEN

+46 31 285 280

[customercenter@parttrap.com](mailto:customercenter@parttrap.com)

[www.parttrap.com](http://www.parttrap.com)

